

McShin Data Snapshot

McShin research and data collection efforts surveyed multiple domains this year. Of the 412 participants that came through McShin housing between January 2018 and March 2019, 313 responded to our survey efforts. The Data for The McShin Foundation is collected through self-reported results by our participants.

Criminal Justice



5.3%

Percentage of Alumni that have been arrested since coming through The McShin Foundation



90%

Percentage of participants who had previous arrest upon entry



71%

Percentage of Alumni that have not been arrested since leaving McShin



Recovery



McShin
Recovery Resource
Foundation



Percentage of alumni not engaged in recovery



Percentage of alumni that are engaged in recovery. [Recovery is defined as being engaged in one of the multiple pathways of recovery: 12-Step Program, Faith-Based, MAT, Abstinence, etc...]



Percentage of alumni that did not respond to our survey

Employment

55%

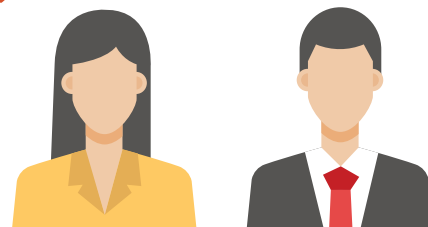
Percentage of alumni that are currently employed

21%

Percentage of alumni currently unemployed

24%

Percentage of alumni that did not respond to our survey



Success rate is calculated by combining and averaging the positive outcome values of; Recovery Engagement, Employment, and Contact with the Criminal Justice System. In doing this, results show McShin alumni have a 63.8% success rate.

We utilize the same measure of success as defined by The Journal of Substance Abuse Treatment and The Public Health Institute (2018).